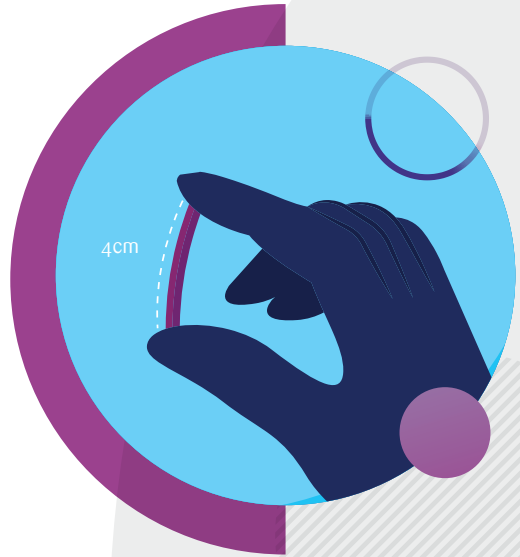


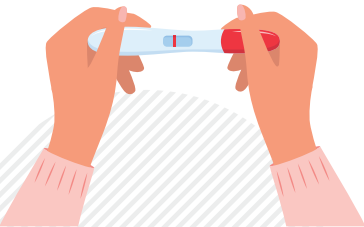
Preparation for Subdermal Contraceptive Implant Device (SDI) INSERTION

Implanon Device

- Currently, the implant device is NOT available at PHCC health centers.
- You must purchase the device from any local pharmacy or abroad (Qatari and non-Qatari Population).
- Bring the device with you on the appointment day.



Timing



- Insertion can be performed at any time if pregnancy is not suspected and there is no heavy bleeding.
- A urine pregnancy test may be required during clinic visit if pregnancy is suspected and SDI insertion procedure may not take place.

Preparation

- Personal hygiene is important.
- Wear loose comfortable clothes.
- Try to come for the appointment without children.
- Ensure that you do not have any commitments after the insertion procedure as you may need observation for 30 minutes at the Health Center.
- It is advisable to take painkillers an hour before the procedure (such as ibuprofen or paracetamol if you are not allergic)

